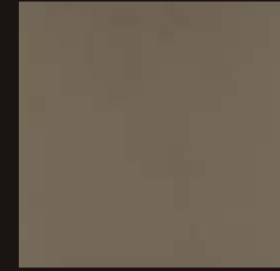
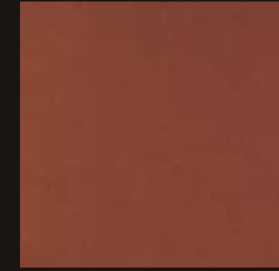


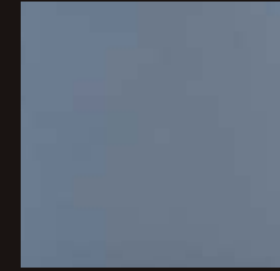
Nero



Mushroom



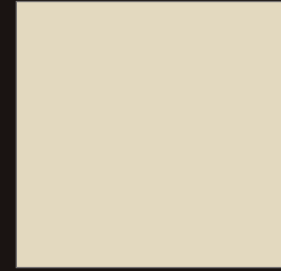
Terracotta



Azzuro



Steel Grey



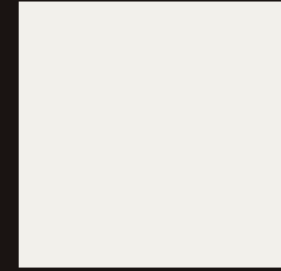
Ivory



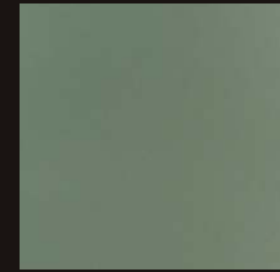
Polo



Super Polo



Ultra White



Nigeria



Granamite Fulbody Design tiles come in the rich eloquence of granite. Or the understated elegance of plain finish. Giving your floors that magical quality which makes heads turn. Its finished smooth surface prevents skids and slips and provides ease in maintenance. Granamite range is acknowledged by professionals of the industry as the finest flooring material for medium to high traffic areas. Suitable for homes, commercial centres, shopping malls, airports, hotels, hospitals, educational institutions, multiplexes, food courts and public areas, among others.



Floor jewels from Restile

Packing Details

Size	Nominal Thickness	No. of Tiles per Box	Area Covered
600mm x 600mm	9.5 mm	4 Pieces	15.50 sq. ft.
396mm x 396mm	9.5 mm	6 Pieces	10.13 sq. ft.
300mm x 300mm	7.5 mm	11 Pieces	10.66 sq. ft.

BENEFITS OF FULBODY VITRIFIED TILE

Granamite Fulbody Design Vitrified tile is a homogenous body, with designs running from the surface right down to the bottom. The designs with subtle variations in each tile give a very natural look to your floor, just like any marble or granite floor. Granamite tiles are incredibly tough right through with an extremely hard surface measuring 8 MOHs and are processed for a super smooth finish with a low porosity of 0.03%. Granamite is highly resistant to abrasion, stain and scratch which means when you transform your floor with Granamite Fulbody tiles, the floor retains its natural and elegant looks for a lifetime.



◀ Cross section of Restile fulbody vitrified tiles

Restile
The Original **FULBODY** Tiles

RESTILE CERAMICS LIMITED

Regd. Office & Works: Malkapur Village, Hatnoora Mandal, (Via) Ismail Khan Pet, Medak Dist. - 502 296, A.P., India.
Tel: +91-8458-200499/599, 288772 Fax: +91-8458-288502 E-mail: works@restile.com, Website: www.restile.com
Gujarat Address: Village: Cavasad, Taluka: Padra, District Vadodara - 391 430.
Tel: +91-2662-242350 Fax: +91-2662-245222 E-mail: barodaworks@restile.com
E-mail: contact@restile.com, investor.relations@restile.com

Branch Offices: ■ Ahmedabad: 3, Shreyas Complex, Behind Rushika Complex, Near Dinesh Hall, Income Tax Cross Road, Ahmedabad-380 009, Tel: 079-26581697, Telefax: 079 - 4006 9079 ■ Bangalore: Tel.: 080 - 6454 1565 ■ Chandigarh: Tel.: 0172 - 2637 934 ■ Chennai: Tel.: 044 - 4355 1231 ■ Hyderabad: Tel.: 040 - 2375 4060 ■ Kochi: Tel.: 0484 - 6451 921 ■ Mumbai: 506,507 Acme Plaza, Andheri Kuria Road, Andheri (East), Mumbai-4000 59, Tel.: 022-2824 4518, Fax: 022-2822 2410 ■ New Delhi: C- 107, 2nd Floor, Lajpat Nagar-I, New Delhi-110024, Tel.: 011-2981 0932, TeleFax: 011-2981 0931 ■ Pune: Office No. 20, 2nd Floor, Dalal Chambers, Behind Shivaji Maharaj Statue, Market Yard, Near Darpan Hotel, Pune-411 037, Tel.: 020- 2426 1257

International Correspondence: C/o. 24, Boon Lay Way, # 01-73, Trade Hub 21, Singapore - 609969, Tel: +65 - 63247787, Fax: +65 - 63247797, E-mail: exports@restile.com

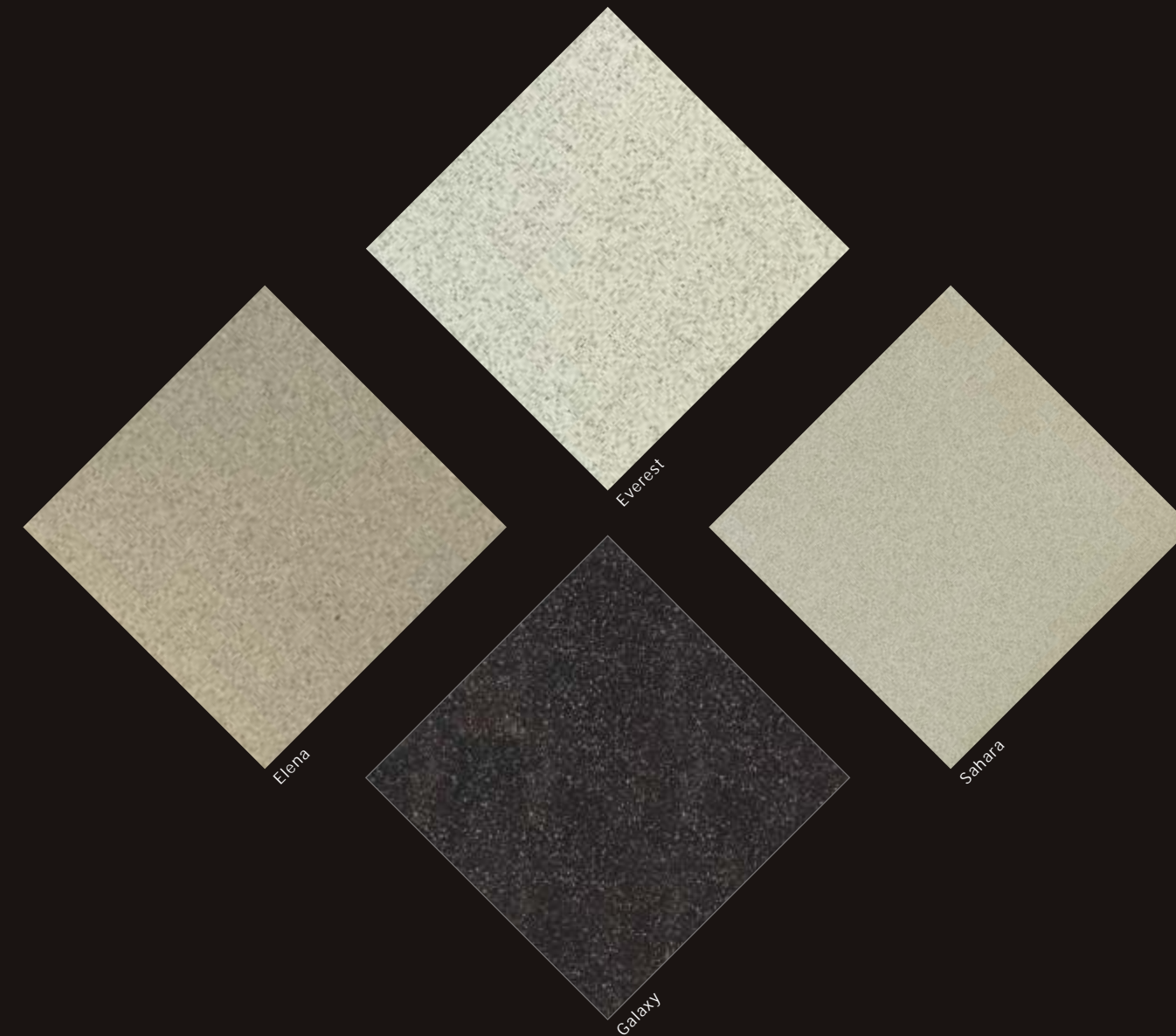
Colours shown are as accurate as the limitations of the printing process will allow. Every effort has been made to ensure accuracy of the information given. Company reserves the right to change specifications without any prior notice.



THE ORIGINAL REVOLUTION IN TILES. FULBODY TILES FROM RESTILE.

Restile, established 20 years ago, changed the way the nation looked at tiles by introducing Fulbody Design tiles for the first time in the country. It is the original wonder material in flooring that changed the way people looked at floors. Forever! Its incredible strength and properties makes it chip, warp, crack, scratch, stain, heat and chemical resistant. And its striking looks make your floor the envy of neighbours, friends and peers alike! Born from the same lineage are Granamite Fulbody Design tiles. From Restile.

Granamite Granite Series



- ◆ Offices ◆ Lobbies
- ◆ Supermarkets ◆ Malls
- ◆ Classrooms
- ◆ Auditoriums ◆ Hospitals
- ◆ Operation Theaters
- ◆ ICU's ◆ Clinics
- ◆ Diagnostic Centers
- ◆ Studios ◆ Art Galleries
- ◆ Museums ◆ Prayer Halls
- ◆ Locker Rooms ◆ Exhibition Centers
- ◆ Marriage Halls
- ◆ Clubs ◆ Gyms ◆ Beauty Parlours
- ◆ Fitness Studios
- ◆ Yoga Centers ◆ Cinema Halls
- ◆ Gaming Zones
- ◆ Libraries ◆ Book Stores
- ◆ Music Halls ◆ Rest Rooms
- ◆ Restaurants ◆ Food Courts
- ◆ Ice Cream Parlours
- ◆ Coffee Shops ◆ Pubs

Full Body Vitrified Tiles



Full Body Design Vitrified Tile surfaces will retain the same look irrespective of wear & tear.

Non Full Body Vitrified Tiles



All other surfaces of non Full Body Design Vitrified Tile will fade away over a period of time due to heavy wear & tear.



Granamite Lifestyle Series

